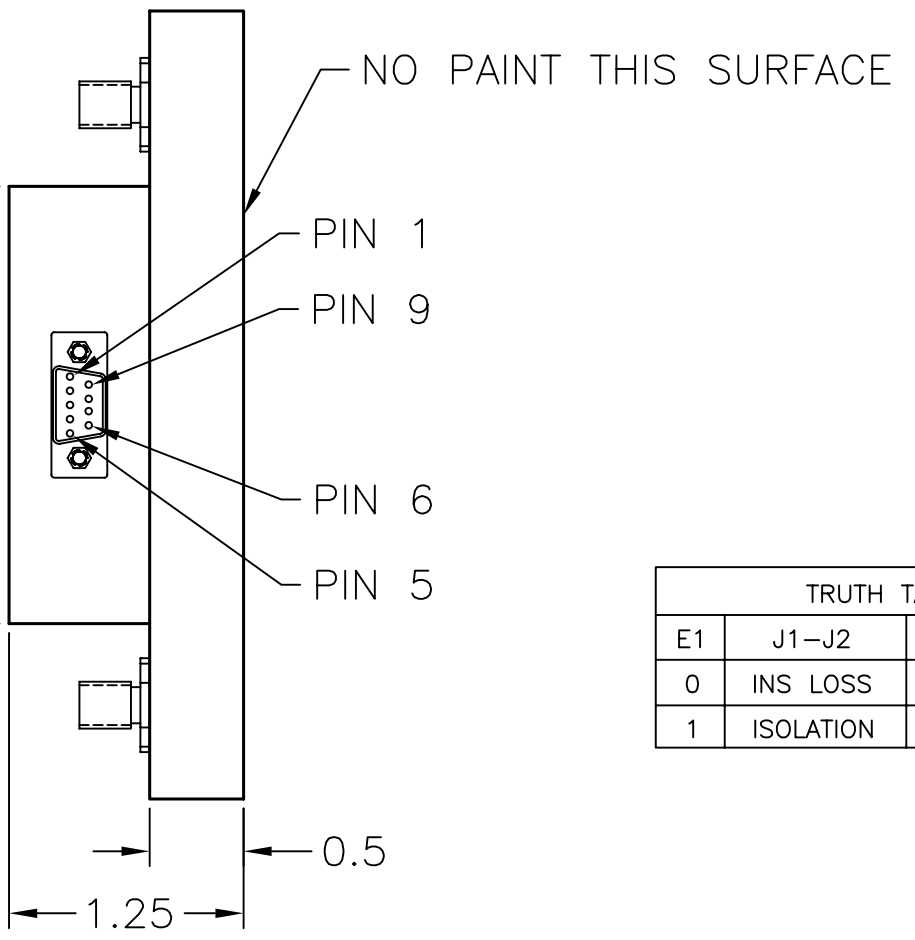
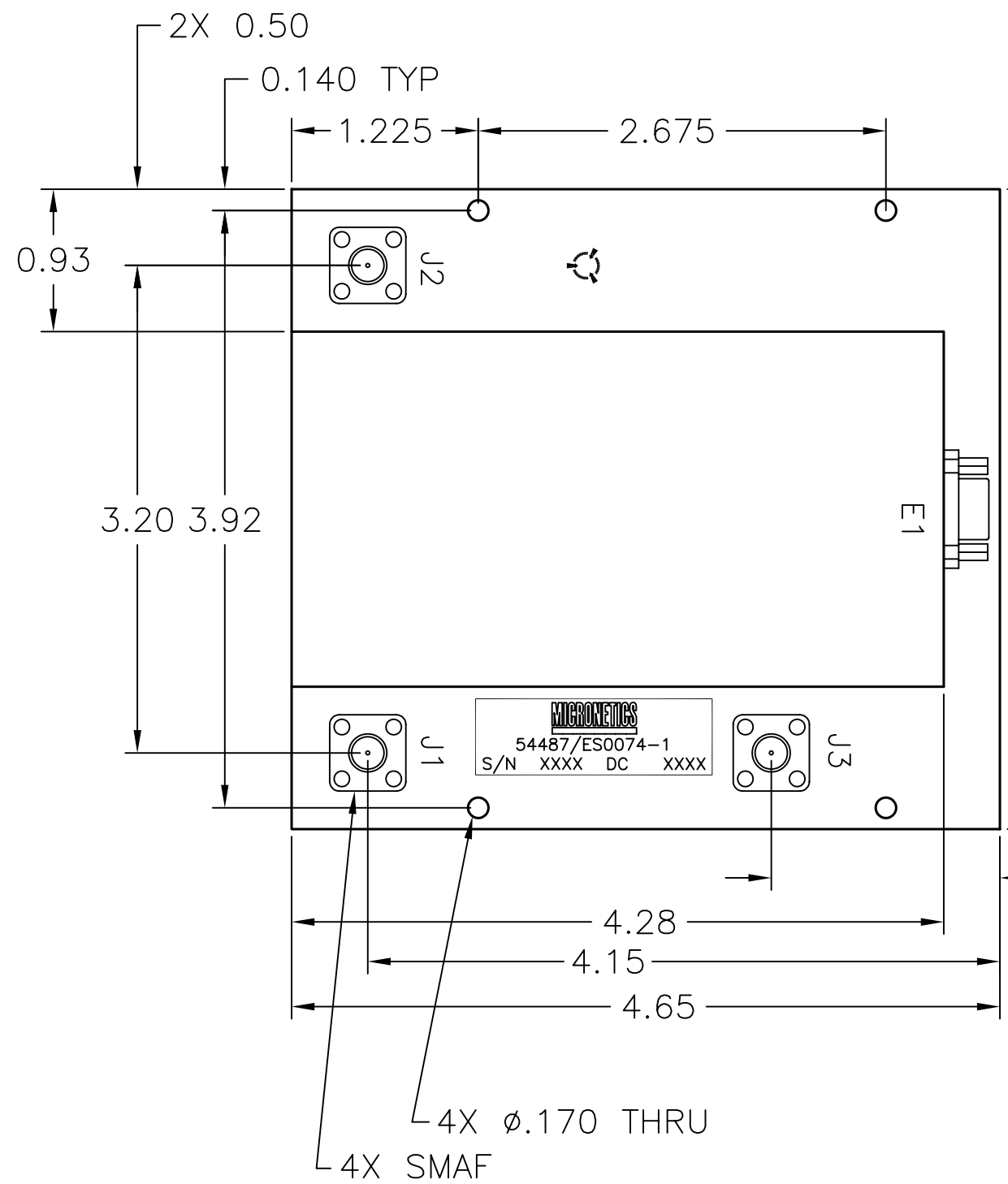


REVISIONS					
ZONE	REV.	ECO NO.	DESCRIPTION	DATE	APPROVED ENG. QC. MFG.
	1		ENGINEERING RELEASE		



TRUTH TABLE		
E1	J1-J2	J1-J3
0	INS LOSS	ISOLATION
1	ISOLATION	INS LOSS

- NOTES:
1. PRIMER: YELLOW, PER MIL 23377, TYPE I, CL 1
 2. PAINT: EPOXY SEMI-GLOSS, WHITE, PER MIL-C-22750, COLOR - 27875.

UNLESS OTHERWISE SPECIFIED DIMENSIONS ARE IN INCHES TOLERANCES ON FINISH: $\sqrt{\text{V}}$ ANGLES: $\pm 1/2$ FRACTIONS: $\pm 1/64$ 4 PLACE DECIMALS: ± 0.0005 3 PLACE DECIMALS: ± 0.005 2 PLACE DECIMALS: ± 0.01 COMMERCIAL PUBLISHED TOLERANCES SHALL APPLY TO TUBING, BAR, PLATE ETC. ALL THREADS TO BE CLASS 2A OR 2B. PLATED PARTS MUST FIT GAUGES AND MEET SPECIFIED TOLERANCES AFTER PLATING. CAUTION UNLESS THIS DRAWING BEARS AUTHORIZED SIGNED APPROVAL(S) IT IS PRELIMINARY AND IS NOT TO BE USED FOR MANUFACTURING PURPOSES.	DRAWN BY JWT	DATE 5/2/07	MICRONETICS, INC. 26 HAMPSHIRE DRIVE * HUDSON, N.H. 03051 TEL.: (603) 883-2900 * FAX: (603) 882-8987		
	CHECKED BY	DATE	TITLE OUTLINE DRAWING ES0074-1, SPDT, 5KW PK		
	ENGINEER	DATE	SIZE B	FSCM NO. 54487	DWG NO. OD-ES0074-1
	THIRD ANGLE PROJECTION 	DO NOT SCALE DRAWING	SCALE 2 TO 1	SHEET 1 OF 1	